

May I Be Empty

♩ = 75

(No Chords, a capella)



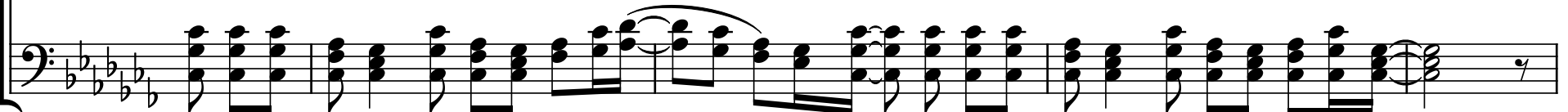
May I be empty and o-pen to re-ceive_____ the light, may I be empty and o-pen to re-ceive.



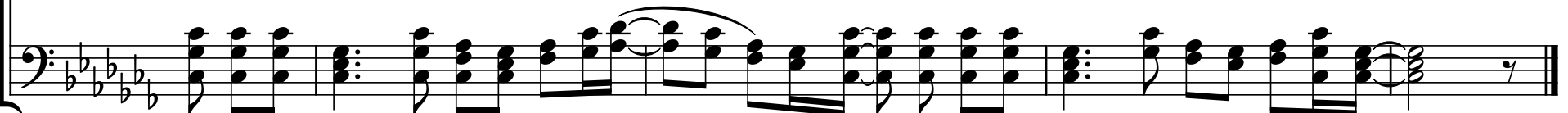
May I be full and o-pen to re-ceive_____ the light, may I be full and o-pen to re-ceive.



May I be empty and o-pen to re-ceive_____ the light, may I be empty and o-pen to re-ceive.



May I be full and o-pen to re-ceive_____ the light, may I be full and o-pen to re-ceive.



Arrangement Permissions

👉 One-time Adaptation

👍 New Arrangement OK

🚫 Seek permission to arrange

Look at the Sing Out Love "Permissions" section for further explanation